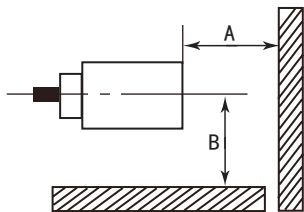


Dear customers:

In order to operate this product properly and safely, please read this instruction sheet carefully before operation so as to avoid unnecessary damage or loss.

■ Precautions in using the product

- 1、 When the product is used under the circumstances below, ensure adherence to the limitations of the ratings and functions. Also, take countermeasures for safety precautions such as failsafe installations.
 - (1)Use under the circumstances or environment which are not described in the instruction sheet.
 - (2)Use for the equipment which require higher level of safety, such as nuclear devices, railroad, aircrafts, vehicles, combustion devices, amusement machinery, medical equipment, safety device.
 - (3)Use for the applications where death, serious injury or property damage is possible and extensive safety precautions are required.
- 2、 Keep following items to secure danger:
 - (1)Do not use in ambience of flammable, volatile gas;Do not decompose, repair or modification .
 - (2)The product may explode or be burned with following misuseage.
 - A: To apply excess voltage,or to apply AC source as the power source.
 - B: To short-circuit the load.
 - C: To reverse polarity,or to miss-wire.

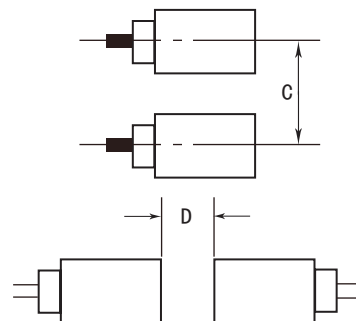


Diagram"1"

Model	A(mm)	B(mm)
TL-EN/P8C	30	30
TL-ENC/PC8C		

■ Correct operations

- 1、 Do not use in the following ambience:
 - A:Direct sunlight, rain, snow and waterdrop
 - B:Chemicals, especially solvents and acides
 - C:Corrosive gas,erosive gas
- 2、 Proximity sensor may have malfunction with using cellular phones or transceivers near by.
- 3、 Putting into the same pipe or duct with high-voltage line or power line may cause malfunction, or destruction because of induction.
- 4、 Mounting:
 - Tighten the screw to the torque of 0.59N.m maximum.
- 5、 Effects of surrounding metals:
 - Be sure that nearby metal from the proximity sensor at a distance greater than that shown in diagram"1", to prevent malfunctions.
- 6、 Be sure that the two sensors at a distance greater than that shown in diagram"2", to prevent mutual interference.



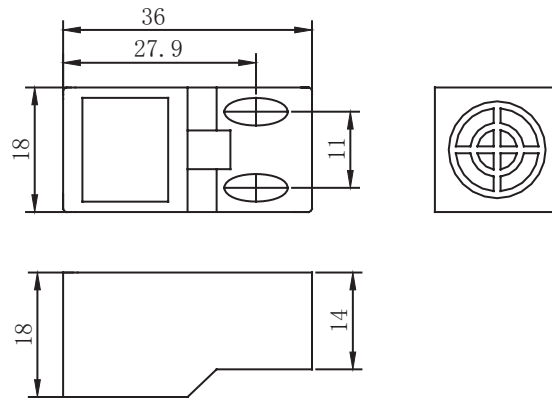
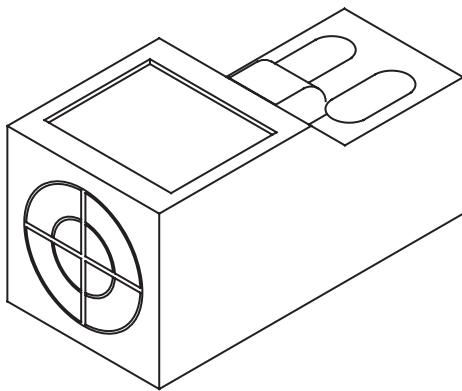
Diagram"2"

Model	C(mm)	D(mm)
TL-EN/P8C	80	150
TL-ENC/PC8C		

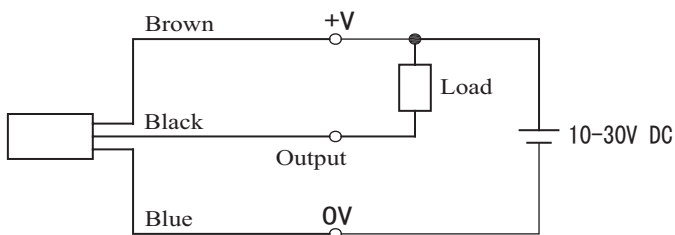
■ Technical Specifications:

Type	DC-3wire	
Model	TL-EN8C/TL-ENC8C	TL-EP8C/TL-EPC8C
Output	NPN NO/NPN NC	PNP NO/PNP NC
Rated operating distance	8mm	8mm
Assured operating distance	0~6.4mm	0~6.4mm
Frequency	≤200Hz	≤200Hz
Rated operational current	≤200mA	≤200mA
Power supply	DC 10-30V	DC 10-30V
Protection level	IP66 (IEC)	IP66 (IEC)
Ambient temperature	-25°C-75°C	-25°C-75°C

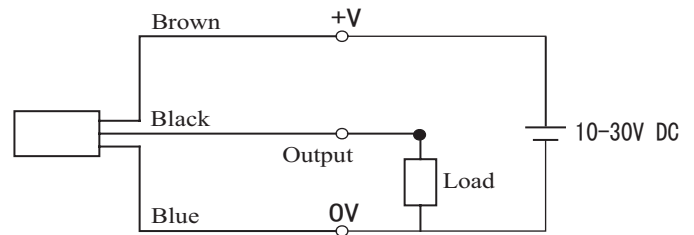
■ Dimensions: [Unit:mm]



■ Connection Diagrams



***Max.Load current:200mA**
(NPN)



***Max.Load current:200mA**
(PNP)