



# Fieldbus Indicators and Displays



for use in **safe** and  
**hazardous areas**

visit our website [www.beka.co.uk](http://www.beka.co.uk)

**BEKA**  
associates



# process visualisation...

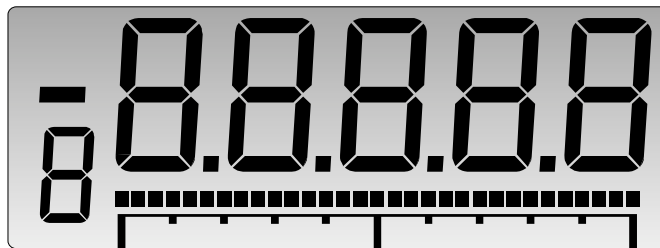
## conventional to **fieldbus**

BEKA associates manufacture the most extensive range of site proven bus powered fieldbus indicators and displays for both FOUNDATION™ fieldbus and PROFIBUS PA protocols. Featuring large easy to read displays there is a model for most safe and hazardous area applications.

### FIELDBUS INDICATORS

Economic single variable and versatile eight variable indicators have bold 5 digit 20mm high characters plus 31 segment analogue bargraphs. The 8 variable models show one variable at a time and may be configured as a fieldbus node or as a fieldbus listener. When configured as a node the indicator's push buttons may be used for sending operator requests to the system host.

FOUNDATION™ fieldbus	PROFIBUS PA	
<b>Single variable</b>		
BA414DF-F	—	Field mounting intrinsically safe
BA414NDF-F	—	Field mounting Type n for Zone 2
BA418CF-F	—	Panel mounting intrinsically safe
BA614DF-F	—	Field mounting for safe area
BA618CF-F	—	Panel mounting for safe area
<b>8 variables displayed one at a time</b>		
BA444DF-F	BA444DF-P	Field mounting intrinsically safe
BA444NDF-F	BA444NDF-P	Field mounting Type n for Zone 2
BA448CF-F	BA448CF-P	Panel mounting intrinsically safe
BA644DF-F	BA644DF-P	Field mounting for safe area
BA648CF-F	BA648CF-P	Panel mounting for safe area



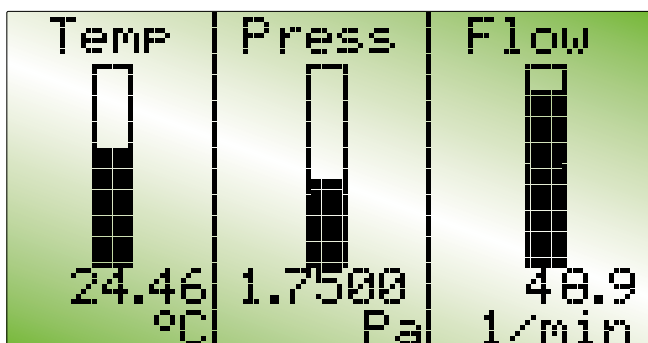
Fieldbus indicator digits shown full size

### FIELDBUS DISPLAYS

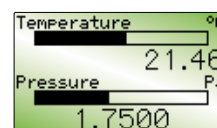
Simultaneously display up to 8 process variables on a 120 x 64 pixel backlit screen. Selectable formats include 1, 2, 3, 4 or 8 variables per screen, some with bargraphs, units of measurement and variable identifications. Options include local alarm outputs configured via the instrument's push buttons that can each switch a separately powered load such as a sounder or a beacon.

PROFIBUS PA models can send operator requests to the system host via the instrument push buttons or external switches.

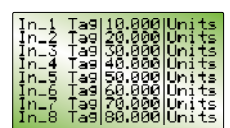
FOUNDATION™ fieldbus	PROFIBUS PA	
<b>Up to 8 variables displayed simultaneously</b>		
BA484DF-F	BA484DF-P	Field mounting intrinsically safe
BA488CF-F	BA488CF-P	Panel mounting intrinsically safe
BA684DF-F	BA684DF-P	Field mounting for safe area
BA688CF-F	BA688CF-P	Panel mounting for safe area



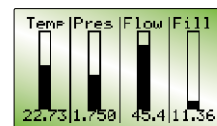
One of eleven selectable screens shown full size



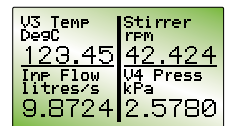
Two variables + horizontal bargraphs



Eight variables



Four variables + vertical bargraphs



Four variables



# Fieldbus Indicators 5 digits and 31 segment bargraph, shows one variable at a time

	Mounting	Number of variables	Operator push buttons	Function N Node L Listener	Europe ATEX Intrinsic safety		USA FM & Canada cFM Intrinsic safety & nonincendive		International IECEx Intrinsic safety	
					Gas	Dust	Gas	Dust	Gas	Dust
<b>Intrinsically safe – for use in all gas and dust hazardous areas</b>										
BA414DF	Field	1	0	N	✓	✓*	✓*	✓*	✓	✓*
BA418CF	Panel	1	0	N	✓	–	✓	–	✓	–
BA444DF	Field	8	4	N or L	✓	✓*	✓*	✓*	✓	✓*
BA448CF	Panel	8	6	N or L	✓	–	✓	–	✓	–
<b>Type n – for use in Zone 2 gas and Zone 22 dust hazardous areas</b>										
BA414NDF	Field	1	0	N	✓	✓	–	–	✓	✓
BA444NDF	Field	8	4	N or L	✓	✓	–	–	✓	✓
<b>General purpose – for use in safe areas</b>										
BA614DF	Field	1	0	N	–	–	–	–	–	–
BA618CF	Panel	1	0	N	–	–	–	–	–	–
BA644DF	Field	8	4	N or L	–	–	–	–	–	–
BA648CF	Panel	8	6	N or L	–	–	–	–	–	–

# Fieldbus Displays 120 x 64 pixel display with backlight, displays up to eight variables simultaneously

<b>Intrinsically safe – for use in all gas and dust hazardous areas</b>										
BA484DF	Field	8	4	N	✓	✓*	✓*~	✓*~	✓	✓*
BA488CF	Panel	8	6	N	✓	–	✓~	–	✓	–
<b>General purpose – for use in safe areas</b>										
BA684DF	Field	8	4	N	–	–	–	–	–	–
BA688CF	Panel	8	6	N	–	–	–	–	–	–

\* Option ~ Not cFM

Protocol defined by model suffix: **-F** FOUNDATION™ fieldbus **-P** PROFIBUS PA



**Field mounting model**

Operating temperature -20 to +60°C  
Some models have wider range see datasheet

Enclosure GRP IP66

**Panel mounting model**

Operating temperature -20 to +60°C  
Some models have wider range see datasheet

Enclosure Front IP66 rear IP20

## BEKA associates Ltd

Old Charlton Road, Hitchin, Hertfordshire SG5 2DA, England Telephone +44 (0)1462 438301 Fax +44 (0) 1462 453971

www.beka.co.uk e-mail sales@beka.co.uk